

Gare Maritime

A City under One Roof

From trade shows to cultural events, a stage for every experience



ENDLESS EXPERIENCES.
UNFORGETTABLE MOMENTS.

TOUR & TAXIS
VENUES



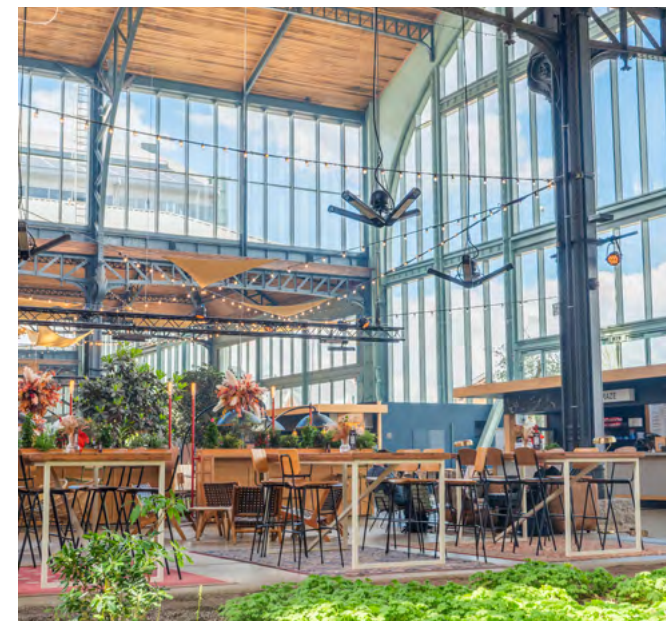
A CITY UNDER ONE ROOF

Gare Maritime is designed as a city under a roof, blending working, shopping, entertainment, dining, and event spaces. Once an early 20th-century railway station, it has been renovated and reinvented into a monumental venue where heritage and contemporary architecture coexist in harmony.

The project integrates 12 new volumes beneath the historic shell, respecting both the building's scale and the surrounding urban fabric. Open areas have been carefully organized to include:

- » **A central, monumental hall** for a wide range of events.
- » **Thematic gardens and green boulevards**, bringing the adjacent park into the heart of the venue.
- » **The Gare Maritime Food Market**, a dynamic culinary village offering guests a unique and convivial experience.

Sustainability is at the core of every activity in Gare Maritime, with renewable energy generation, natural ventilation, and certified eco-friendly materials.

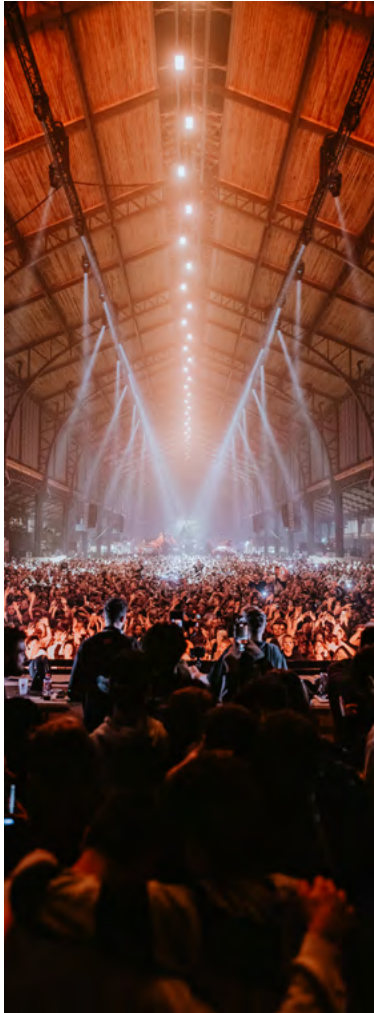




STRENGTHS & FEATURES

- » **Iconic venue:** a listed building renovated by Neutelings Riedijk Architects, combining heritage and contemporary design.
- » **“City under a roof” concept:** a covered urban quarter blending public and private spaces for a unique city experience.
- » **Light-filled and sustainable architecture:** natural daylight and summer ventilation.
- » **Vibrant ecosystem:** surrounded by offices, shops, restaurants, and a large green esplanade.
- » **Food Market:** diverse culinary concepts for informal meals, networking, or event breaks.
- » **Integrated sustainability:** BREEAM Excellent, geothermal energy, photovoltaic panels (BIPV), rainwater recovery, FSC-certified wood, 3,500 tonnes CO₂ saved.
- » **Indoor green spaces:** 3,000 m² of thematic gardens and 100 trees, providing climate comfort and well-being.





SPACES & VOLUMES

- » **Central Grand Hall:** a monumental space for conferences, exhibitions, concerts, and gala dinners.
- » **Modular pavilions:** adaptable for workshops, exhibitions, or cocktail receptions.
- » **Hybrid spaces:** fully customizable for small or large-scale events.
- » **Food Market:** accessible for participants to enjoy a diverse and interactive culinary experience.
- » **Event area:** up to 5 000 m²
- » **Total area:** ± 40,000 m²





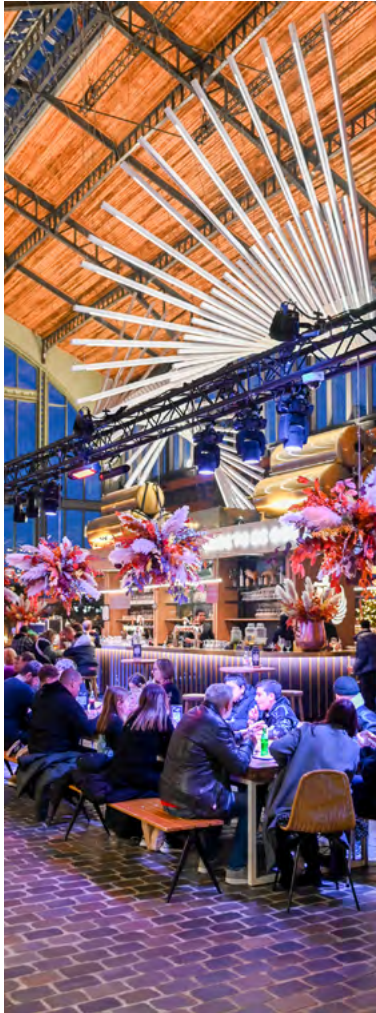
INFORMATION

Download our **Technical Manual** for all the constructive and technical parameters to consider in the development of temporary installations in Gare Maritime.

RENTAL CONDITIONS

For more information on pricing and rental conditions, contact Jean Vandamme : jean.vandamme@tour-taxis.com





CATERING

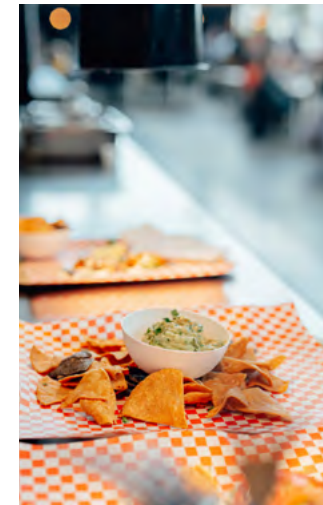
The catering is exclusively provided by the Food Market:

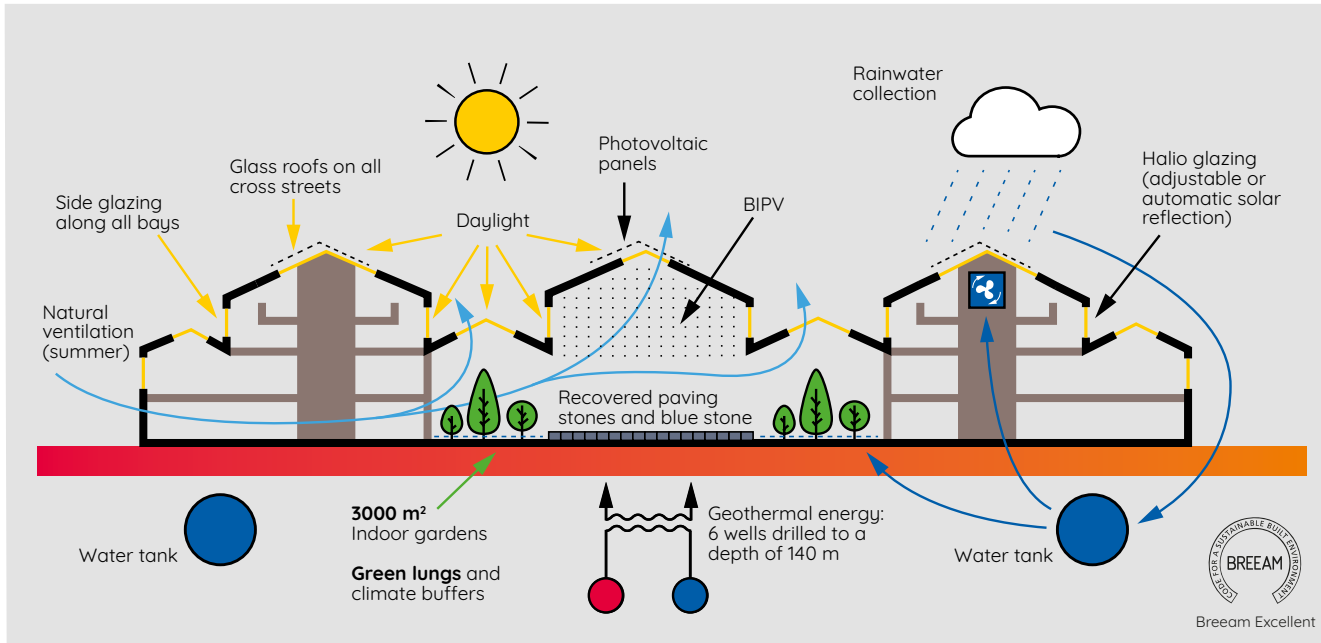
www.garemaritimefoodmarket.be

Varied, local, and seasonal offerings curated by national and international chefs.

Ideal for cocktails, lunches, dinners, or networking breaks in a modern, convivial setting.

Corporate contact: corporate@garemaritime-foodmarket.be





SUSTAINABLE EVENTS, LASTING IMPACT

The Gare Maritime doesn't have a heating system. The building is self-regulating.

Depending on the temperature, the central flaps can be opened. These flaps may also open if an alarm is triggered. It is therefore important to ensure that no valuable items are placed directly under the flaps.

The ventilation systems are subject to regular inspections.

It is imperative to inform us of any use of smoke and/or independent heat sources. The alarm sensors are extremely sensitive, and it might be necessary to deactivate the sensors.



Flame retardant treatment of steel columns

Historic wooden roof underlayment sanded and locally replaced

Canopies are integrated in the roof

7,500 m² of historical paving stones removed and then ground into smooth platinum pavina stones



10,000 m³ wooden constructions

Mechanically connected CLT elements

Finishing of the interior oak facades (EU origin)

Avoids the emission of 3,500 tonnes of CO₂



In enclosed spaces:

- Heat and cold generated by geothermal energy
- Adiabatic cooling: evaporation of water to cool the air

In the halls:

- Natural ventilation (summer)
- Air-conditioned ceilings



10,000 panels photovoltaics on a surface area of 17,000 m²

Production of 3,000 MWh/year - consumption of 850 households

Building Integrated Photovoltaic (BIPV) in the south facades



200,000 tonnes of soil evacuated by ship

2 rainwater tanks of 1,300 m³, 2 m wide and 200 m long:

- Rinsing the toilets
- Watering of green spaces
- Adiabatic cooling



MAISON DE LA POSTE

TOUR & TAXIS: ENDLESS EXPERIENCES. UNFORGETTABLE MOMENTS.

The Hôtel des Douanes at Tour & Taxis is a unique event venue blending heritage and modernity. Built in 1907 with original architectural features, it offers an elegant, historic setting for memorable events.

Maison de la Poste is part of the larger Tour & Taxis site, a dynamic and historic district that houses a wide variety of prestigious venues. From intimate dinners and networking events to major congresses and exhibitions, Tour & Taxis offers upscale, flexible event spaces to suit any format or guest count.

The Sheds are a striking example of Tour & Taxis' transformation. With over 17,000 m² of modular space beneath their iconic sawtooth roof, they've become one of Brussels' largest and most dynamic event venues – hosting major happenings like Street Fest, Affordable Art Fair, Comic Con Brussels and more.

HÔTEL DES DOUANES



THE SHEDS



GARE MARITIME



TOUR & TAXIS: ENDLESS EXPERIENCES. UNFORGETTABLE MOMENTS.

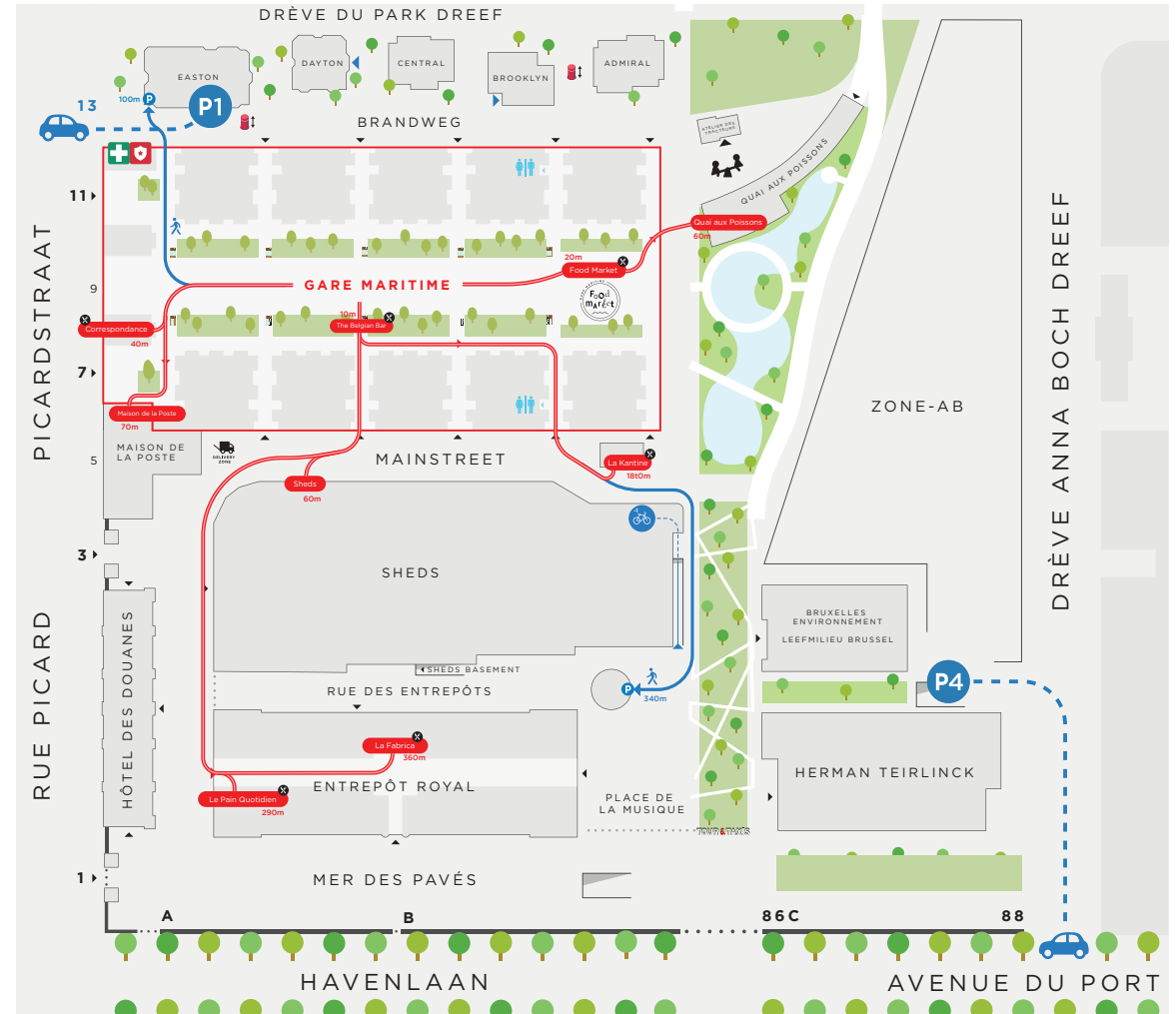




TOUR & TAXIS: ACCESS OUR MANY VENUES

Tour&Taxis has two main semi-public paying car parks.

Accessible 24 hours a day, both are equipped with recharging facilities for electric cars.





IN THE HEART OF IT ALL

This major urban zone is conveniently situated in the heart of Brussels' former dockyards and is easily accessible by road, rail, airport, and public transport.

Brussels Airport provides direct **flights** to nearly 250 destinations and is just 10 km away. The city is also well connected by **rail**, with high-speed Thalys and Eurostar services allowing access from many European cities in under three hours.

Brussels' **public transport** network offers excellent connectivity, with buses, trams, metros, and trains just minutes from Tour & Taxis. A free direct shuttle from North Station ensures seamless transfers for event attendees.

For those arriving by **car**, Tour & Taxis is only minutes from the Brussels ring road, offering connections to major motorways and Brussels Airport. On-site parking is available, including spaces for people with reduced mobility.

The site also encourages **ecofriendly transport** options such as bikes, scooters, and e-bikes.

Download the access map in [French](#) or in [Dutch](#).





LET'S CREATE UNFORGETTABLE EVENTS TOGETHER

FOR FURTHER INFORMATION OR TO VISIT OUR VENUES:

Jean Vandamme - Venue Manager

jean.vandamme@tour-taxis.com

Tour & Taxis Services
Picardstraat 11, Bus 505,
1000 Brussel, Belgium

www.tour-taxis.com

CLICK [HERE](#) TO KNOW MORE ABOUT THE
OTHER TOUR & TAXIS VENUES

